

1997 inductees into the . . .

MRC HALL OF FAME

A/C Ch. Cimmerron's Summer Breeze, CDX, Can. CD
Jeff Gregg and Linda Gregg

Ch. Seren's Just Dazzling Zanne, CDX
Suzan Cain

Kennrich's Sieglinde, Am/Can CD, Am TDX, CDX
Karl and Deborah Gutschera

CT Rodsden's J Socrates V Quira CDX
Jack R. Hlustik

CT Bear, CD
Jack R. Hlustik

Walking H Admrl V Quicksilver, CDX, PCE
Dorothy Holmes

Gerda von Burgthann, AD, BH, SchH III
Max Kaefer

Red Oak's A'Tess V Windrock, A/C CDX
Sharon A. Simon

BISS, A/C Ch. Serrant's Bannor, CD
Scott Russell and Barbara J. Thompson

Can. Ch. Lawler's Cast Iron of Glen Oaks, A/C CDX, TDX, BH
Donna Garske

BIS, BISS, A/C Ch. Haakon Moby v Reishoff, A/C CD
Judith and Paul Nelson

Ch. Stefen Sadie V.H. Kertzenlicht, A/C CD, TD
Wally and Jan Stevens

Can. Ch. Daggy Vom Bierberger Winkel, SchH I
Dr. Philip and Shelley St. John

A/C Ch. Ter Waele Draviet, BH
Dr. Philip and Shelley St. John

A/C Ch. Evrmor's Que Osa Dulce, CDX, Can CD
Ann K. Callahan and Janna P. Morgan

BIS/BISS A/C Ch. Jade Hagen Kodiak, CDX, Can CD
Ernest McDowell

Walking H Dancer v Randan, CD, PC
Dorothy Holmes

Bevrans Krusader V Stefen, UDX
Ronald and Beverly Koldon

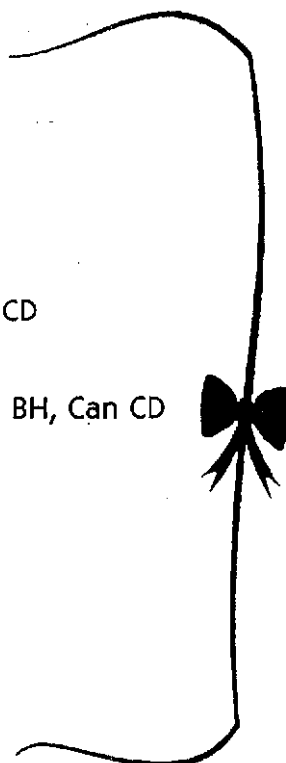
A/C Ch. Gipfel's Bourbon Breeze, CDX, Can CD
Donna Rice

Camas Valley Ruben Elexander, UD, SchH III, BH, Can CD
David and Monica Lundgren

OTCH Carla vom Kasseler-Hof
Emmy Verkozen

Raja Vom Rauberfeld, CDX, SchH I, TDI
Bill Buehrer

A/C Ch. Tri-Lee's Destiny Farwest, CD, TD
Dave and Ellen Minturn



MRC HONOR ROLL

A/C Ch. Poncas Ianandra Von Lundhaus, A/C CD
David and Monica Lundgren

A/C Ch. Farwest's Barritz Von Lundhaus
David and Monica Lundgren

Bierstadt's Royal Razzmatazz, CD
Mary E. King

Ch. Gipfel's Jasmine V Enforcer
Dianne Van Keirsbilck

BIS, A/C Ch. Double D Right on Target
Debbie Coon

Ch. Double D Maitai
Debbie Coon

Ch. Heartlands Murphy V Ponca
Julie A. Miller and James M. Miller

Windrock's Hellsapoppin A/C CDX
Sue Hall

Cubrienne's Never Enough, UD, Mex. CDX
Adrienne Perry and Jane Lash

Brentwood's Belle Kirche, CDX
Justine Church

Yazoo v.h. Brabantpark, CDX, TDI
Susan C. Rademacher

A/C Ch. Nordike Ace Gunner, A/C CD
Norma D. Dikeman

A/C Ch Windrock's Hizz Honor A/C CD
Sharon A. and Michael Simon

Rodsden's Wilma of Bamar, CDX, TDI
Howard G. Bernier

Kirche's Tinc Ich Kaan Kalif, TDX
Mary K. Haley

A/C Ch. Shadowdale's Headliner, CDX, Can CD
Rebecca S. Kucharski



NEWSLETTER
4th Quarter 1997



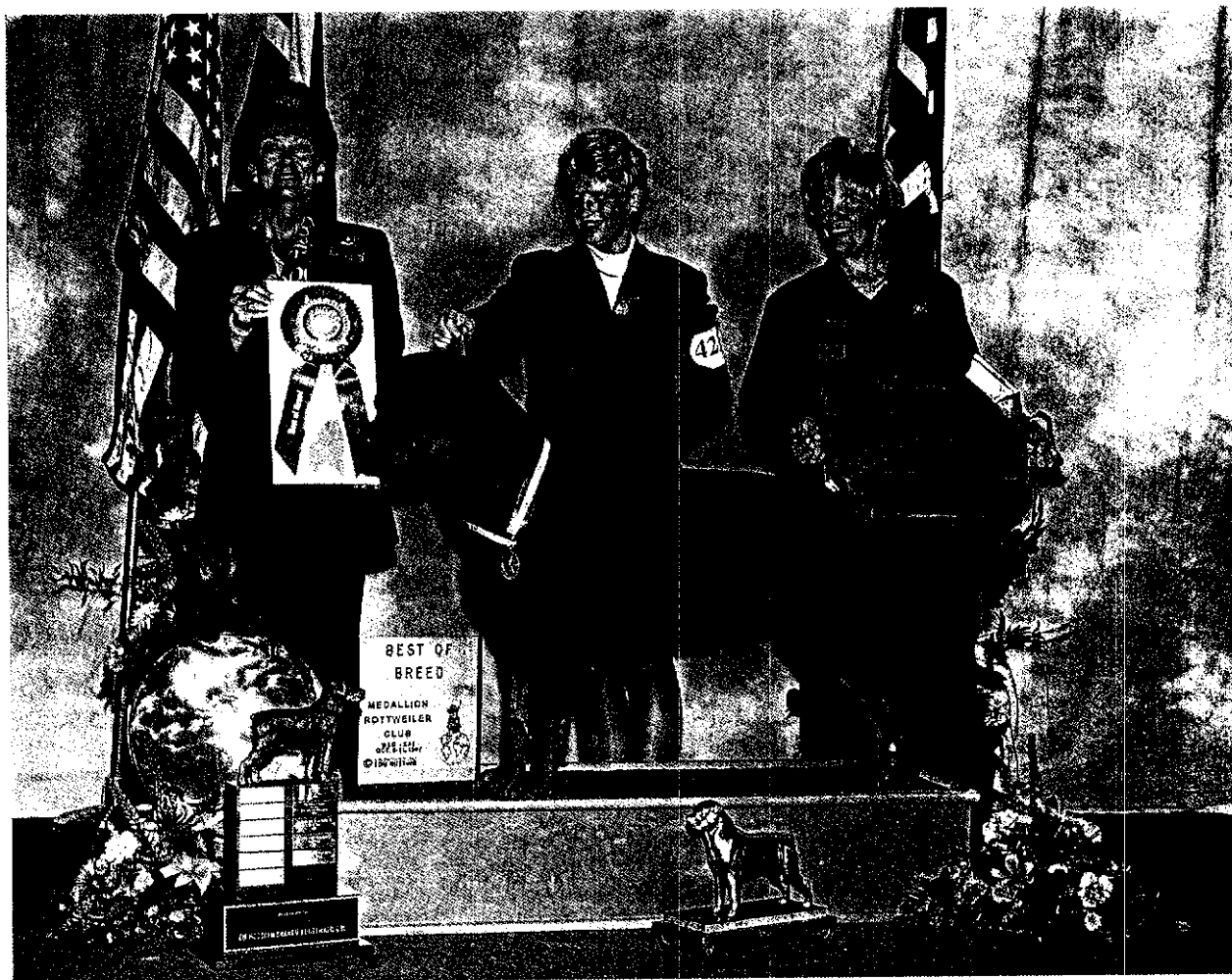
Sue Rademacher,
editor
125 S. Oakwood
West Chicago, IL 60185

MEDALLION ROTTWEILER CLUB

1997 MRC Best In Show



October 1997



Ch. Mount Olympus Cartels Exacta

RO-50120

(Ch. Ironwood's Cade, CD ex Ch. Asphodl's Margra Hazl V. Helk'N)

Handled by Beth Wagner to MRC Specialty Best In Show
under judge Mrs. Betty Leininger
for owners Shelly Jo Page-Jensen and Roger Jensen
529 Market St., S. Shakopee, MN 55379-1559